

Sciener®



Find more information and help for your product at the following
Official website: <http://www.sciener.co>

Please read this manual carefully before installation

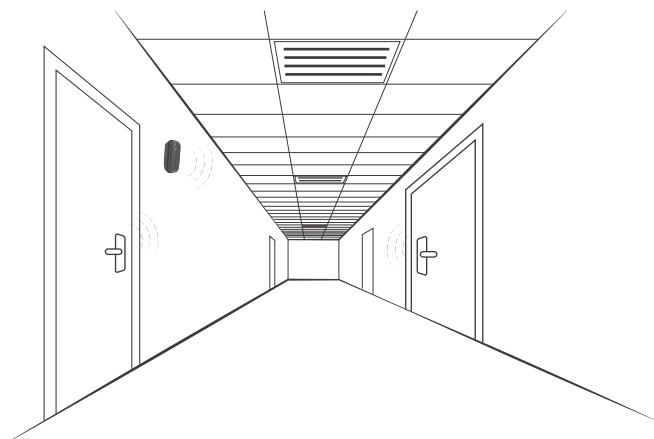
- Please contact us at +6016-8220059 for assistance with installation, commissioning, etc. that have not been listed in the user's installation manual.
- The performance of this product is under continuous improvement, subject to change without notice.

Product Introduction



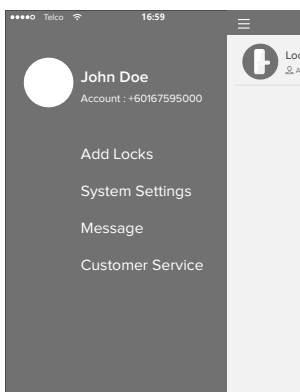
Model	W101 Smart Gateway
Dimensions	W60mm x H138mm x T12mm
Material	Plastic
Communication methods	Bluetooth 4.0ble / WiFi
Supporting systems	App

Suggested installation position

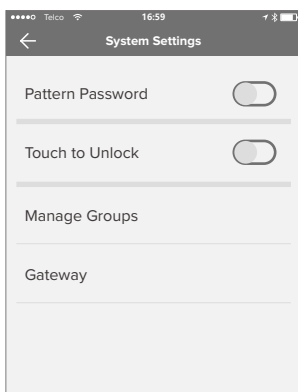


- Install the device in an open, unobstructed location to maximize signal and to have optimal results

APP operating instructions



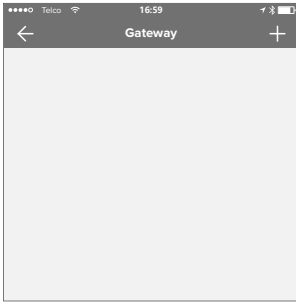
1 Select System Settings



2 Select gateway

Gateway to bind smart lock

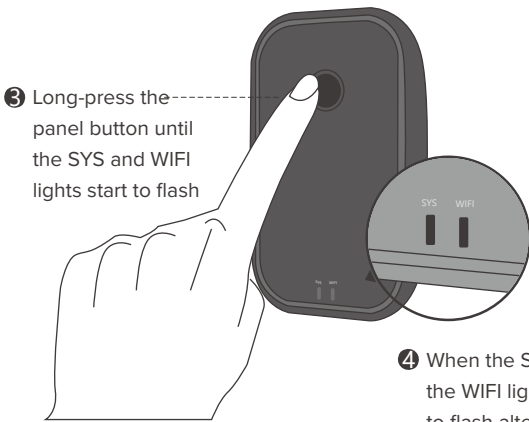
- System settings → Gateway



1 Select +

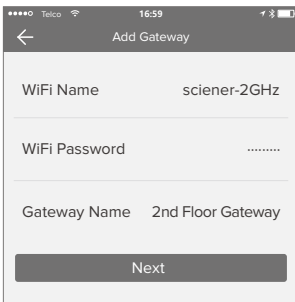


2 Enter WiFi name, password and gateway name

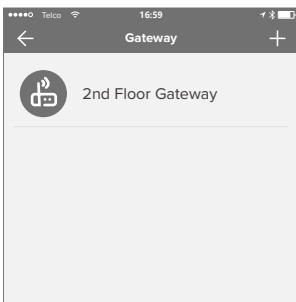


3 Long-press the panel button until the SYS and WIFI lights start to flash

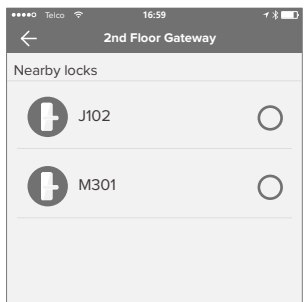
4 When the SYS and the WIFI lights start to flash alternately, pairing can begin



5 Select confirm, wait until addition is complete



6 Select gateway name



7 Select added lock